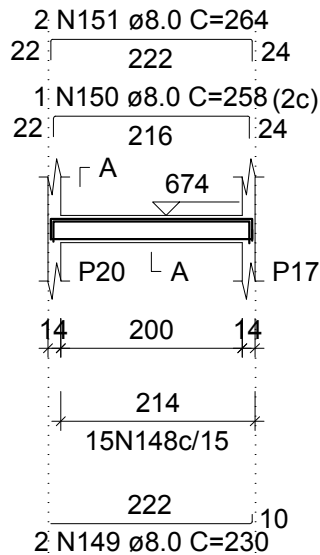


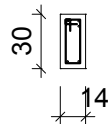
V17 (14 x 30)

ESC 1:100



SEÇÃO A-A

ESC 1:50

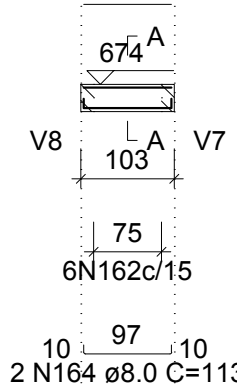


15 N148 ø5.0 C=75

V19 (14 x 30)

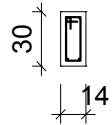
ESC 1:100

2 N163 ø5.0 C=97



SEÇÃO A-A

ESC 1:50

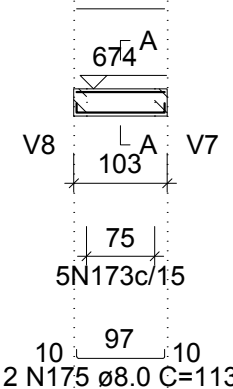


6 N162 ø5.0 C=75

V21 (14 x 30)

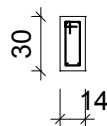
ESC 1:100

2 N174 ø5.0 C=97



SEÇÃO A-A

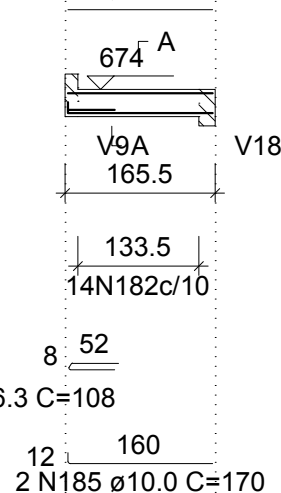
ESC 1:50



V23 (14 x 30)

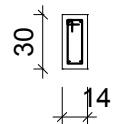
ESC 1:100

2 N184 ø10.0 C=160



SEÇÃO A-A

ESC 1:50



14 N182 ø5.0 C=75